

OvisLink VoIP Basic Settings

SIP Basic Setting Example

Basic System Setting

Connection Diagram

Setting Information

GW A Configuration

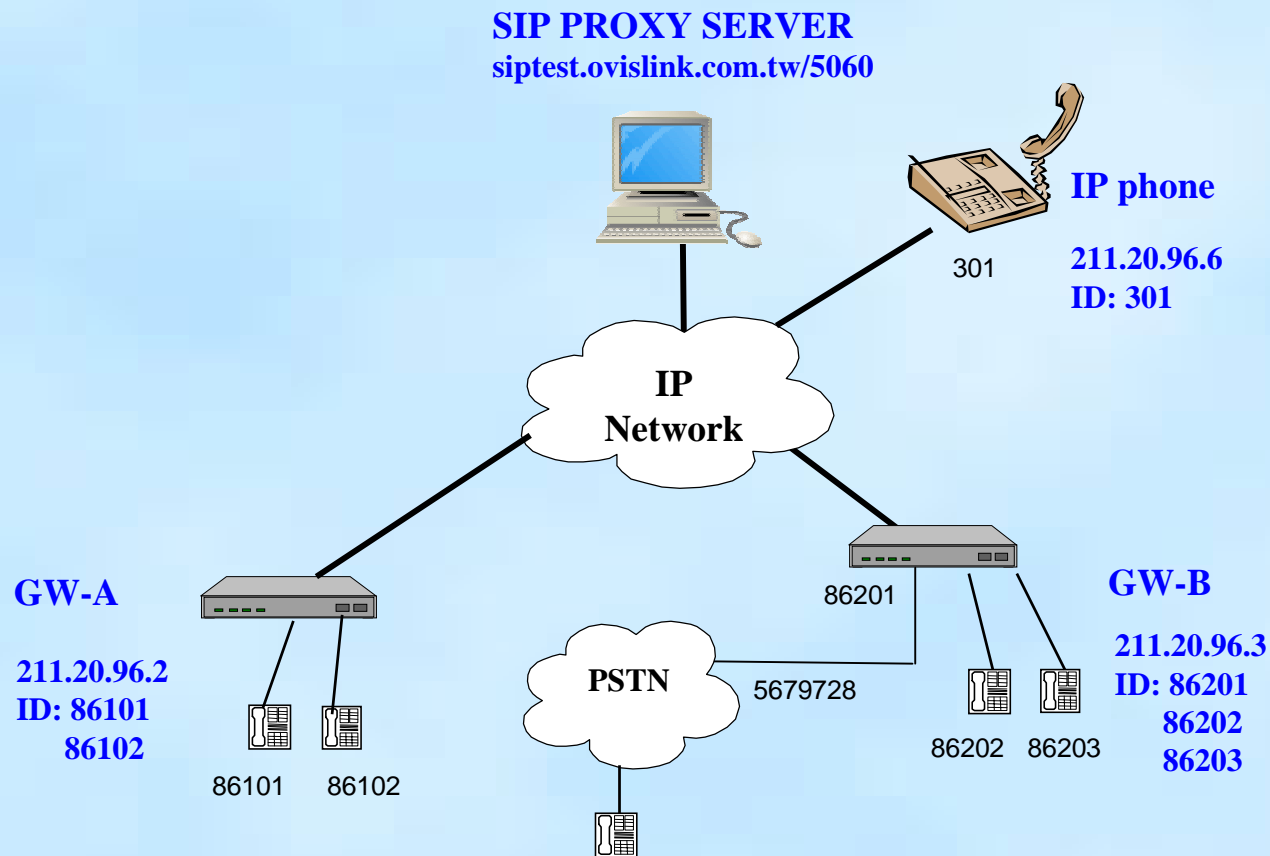
GW B Configuration

Register Result

How to Dial

Connection Diagram

GW A, GW B and IP Phone under the IP Network
GW A and GW B register to a SIP Proxy Server



Setting Information

SIP Proxy Server

IP Address/port: siptest.ovislink.com.tw/5060
Allow Reg. ID, A/C & PW: <86101, A/C: 86101, PW: 86101>
<86102, A/C: 86102, PW: 86102 >
<86201, A/C: 86201, PW: 86201 >
<86202, A/C: 86202, PW: 86202 >
<86203, A/C: 86203, PW: 86203 >

GW-A (2 port FXS)

IP Address: 211.20.96.2
Caller ID, A/C & PW : 86101, A/C: 86101, PW: 86101
86102, A/C: 86102, PW: 86102

GW-B (2 port FXS, 2 port FXO)

IP Address: 211.20.96.3
Caller ID, A/C & PW : 86201, A/C: 86201, PW: 86201
86202, A/C: 86202, PW: 86202
86203, A/C: 86203, PW: 86203
PSTN line number: 567-9728

IP phone

IP Address: 211.20.96.6
Caller ID 301

GW A Configuration

Step 1: Configuring the GW A IP address, subnet mask and gateway

```
Console>net set ip 211.20.96.2  
Console>net set mask 255.255.255.248  
Console>net set gateway 211.20.96.1
```

Step 2: Configuring the GW A SIP setting

```
Console>set sip dns_ip 168.95.1.1  
Console>set sip reg add 86101 500 1 siptest.ovislink.com.tw 5060 86101 86101  
Console>set sip reg add 86102 500 1 siptest.ovislink.com.tw 5060 86102 86102  
Console>set sip auto_reg on  
Console>set port 0 cid number 86101  
Console>set port 1 cid number 86102  
Console>config activate  
Console>config store
```

GW A Configuration (Cont'd)

Step 3: Dail Plan Setting

```
Console>atpm req
Console>atpm purge all
Console>atpm aadd 86101 5 5 1 5
Console>atpm aadd 86102 5 5 1 5
Console>atpm aadd 9 1 16 11 1
Console>atpm aadd 301 3 3 12 0
Console>atpm hadd 1 2 1 2
Console>atpm hadd 11 2 11
Console>atpm hadd 12 2 12
Console>atpm dadd 1 port 0
Console>atpm dadd 2 port 1
Console>atpm dadd 11 dns sipptest.ovislink.com.tw
Console>atpm dadd 12 sip 211.20.96.6
Console>atpm done
Console>atpm store
```

Step 4: Reboot the Gateway

```
Console>net reset y
```

GW B Configuration

Step 1: Configuring the GW B IP address, subnet mask and gateway

```
Console>net set ip 211.20.96.3  
Console>net set mask 255.255.255.248  
Console>net set gateway 211.20.96.1
```

Step 2: Configuring the GW B SIP setting

```
Console>set sip dns_ip 168.95.1.1  
Console>set sip reg add 86201 500 1 sipstest.ovislink.com.tw 5060 86201  
86201  
Console>set sip reg add 86202 500 1 sipstest.ovislink.com.tw 5060 86202  
86202  
Console>set sip reg add 86203 500 1 sipstest.ovislink.com.tw 5060 86203  
86203  
Console>set sip auto_reg on  
Console>set port 0 cid number 86201  
Console>set port 2 cid number 86202  
Console>set port 3 cid number 86203  
Console>set coding all dtmf_relay off  
Console>config activate  
Console>config store
```

GW B Configuration (Cont'd)

Step 3: Dail Plan Setting

```
Console>atpm req
Console>atpm purge all
Console>atpm aadd 86201 5 5 1 5
Console>atpm aadd 86202 5 5 3 5
Console>atpm aadd 86203 5 5 3 5
Console>atpm aadd 9 1 16 11 1
Console>atpm aadd 301 3 3 12 0
Console>atpm hadd 1 2 1
Console>atpm hadd 3 2 3 4
Console>atpm hadd 11 2 11
Console>atpm hadd 12 2 12
Console>atpm dadd 1 port 0
Console>atpm dadd 3 port 2
Console>atpm dadd 4 port 3
Console>atpm dadd 11 dns
siptest.ovislink.com.tw
Console>atpm dadd 12 sip 211.20.96.6
Console>atpm done
Console>atpm store
```

Step 4: Reboot the Gateway

```
Console>net reset y
```

Register Result

After reboot, if SIP ITG registered success, you can see below message

```
***** Internet Telephony Gateway (ACC) Version s011b *****
```

```
***** Hardware Configuration *****
```

```
Flash: type-Am29LV160DB 32 sectors 64 KB/sector
```

```
RAM: 8 MB 512K x 16
```

```
LAN: auto-negotiation on-going. Link DOWN
```

```
TIM slot A: type-FXS2 DSP-C549 codec-DuSLIC-S Diag-OK
```

```
*****
```

```
Password? nmmp_ssmu_activate sent registrar
```

```
nmmp_ssmu_activate sent registrar
```

```
The registration succeeded
```

```
NMM: SIP register phone 86101 1 status: SUCCESS
```

Or you can key-in command "**show sip reg**" check ITG registered data:

```
Console>show sip reg
```

```
Registrar 1: Registered reg_num: 86101
```

```
registrar: sipstest.ovislink.com.tw 5060 expires: 500
```

```
name: 86101 passwd: 86101
```

if you register success , ITG will show "**registered**", otherwise it will show "**UnRegistered**".

How to Dial

Make a Call via the Proxy Server

GW A FXS call GW B FXS

Dial '986202' or '986203'(Hunting)

GW A FXS call GW B FXO to PSTN #

Dial '986201' get PSTN dial tone

Dial PSTN #

GW B FXS call GW A FXS

Dial '986101' or '986102'(Hunting)

PSTN # via GW B FXO call GW A FXS

From PSTN # Dial '5679728' get GW B dial tone

Dial '986101' or '986102'(Hunting)

Make a Call to IP Phone Directly

GW A or B FXS call IP Phone

Dial 301

