

OvisLink

HP-1000E -- Powerline to Ethernet Bridge

- RJ-45 Interface
- Compatible with 110, 220V, and 240V electric outlets.
- 56-Bit Data Encryption Standard (DES) to ensure data security and reliability
- Plug and Play, No driver installation is needed



Features

HP-1000E POWERLINE ETHERNET ADAPTER/BRIDGE is a fast and affordable way to network your PCs at home. Using your existing electrical wiring, you can connect computers, IP phones or any network device in different rooms within your home to share printers, files, and most importantly, high speed Internet connection. It can also be used to expand a wireless network into a "dead zone", as wireless signals cannot penetrate thick walls or reach down to basements. There is no cable to run and no wireless signal falloff. Just connect it the device will work without any configuration!

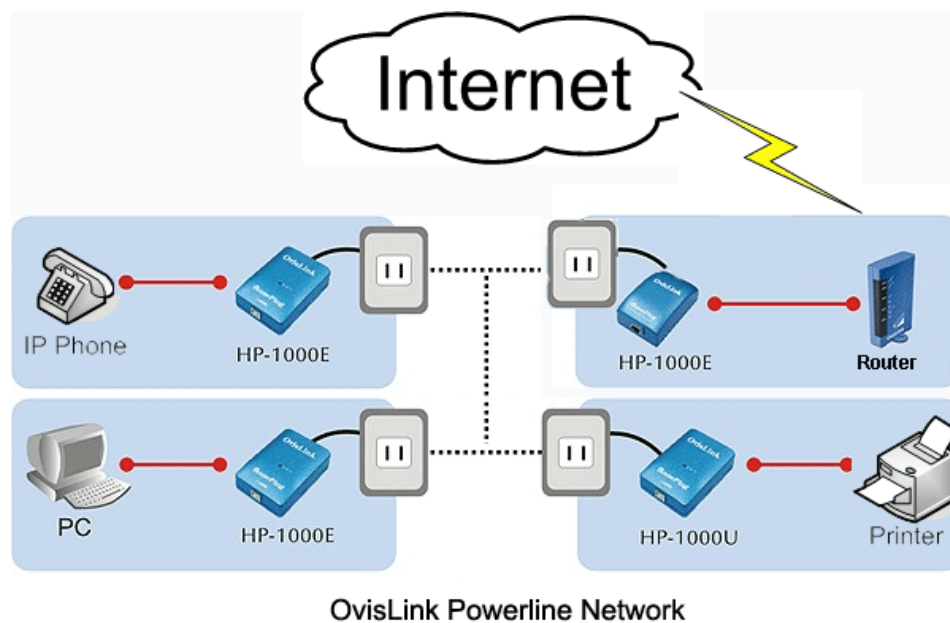
Global Voltage Support

OvisLink feature one important advantage not offered by other vendors. Our PowerLine devices are designed to operate in 110 volt to 240 volt global range. So you can take the device to any place in the world. Moreover, the switching design provides much better protection against voltage fluctuation than other competitor's linear device. Once you use it, it will know notice the superb stability OvisLink's design offer.

Remote Management Ability

Another Industry's first is the remote management ability. This feature gives hotel or apartment operator the ability to enable or disable the device remotely. So operator can control the Internet access without having to go inside the rooms.

Try OvisLink's Homeplug solution today and see why it is getting everyone's attention.



Specification

- Uses home power lines, which are the most pervasive medium in households, with multiple outlets in every room.
- Access, share and distribute information from all over your home Easily scalable with “no new wires” Plug in and Play
- Flexibility of placement
- Ease of Use
- Small and compact size saves valuable desktop space
- Up to 5000 square foot home coverage
- No problems passing through circuit breakers
- More reliable than wireless, which can be intercepted by hackers and local network snoops
- Compliant with household appliances and fully compatible with other HomePlug devices
- Extends the range of wireless devices
- Faster than 802.11b wireless
- Works with 110 volt, 220 volt and 240 volt electrical outlets

Ports:

- One 10/100Mbps RJ-45 for Ethernet interface
- Electrical Plug

Network Data Rate:

- Powerline network data rate up to 14 Mbps into 10/100 Mbps Ethernet

Modulation:

- OFDM symbol modulation
- DQPSK
- DBPSK
- ROBO carrier Modulation

Frequency Band:

- 4.3 MHz - 20.9 MHz

Diagnostic LED:

- Power, LAN Link, Active

Standards:

- IEEE802.3 10Base-T Ethernet (10 Mbps)
- IEEE802.3u Fast Ethernet (100 Mbps) HomePlug 1.0

Additional Protocols:

- Forward Error Correction (FEC)
- Automatic Channel Adaptation

Dimensions:

- 100 mm x 64 mm x 37 mm

Housing:

- Plastic, Light-weighted and compact

OS Support:

- Windows 98/ME/2000/XP