

CompactFlash-Sized
56K Fax Modem Card

Quick Installation
Guide

FCC REGULATORY STATEMENTS

FCC Part 68 Registration

This device complies with FCC Part 68 rules, and the use of this device is subject to the following restrictions:

The FCC has established rules which permit this device to be directly connected to the telephone network. Standardized jacks are used for these connections. This equipment should not be used on party lines or coin phones.

If this device is malfunctioning, it may also be causing harm to the telephone network; this device should be disconnected until the source of the problem can be determined and until repair has been made. If this is not done, the telephone company may temporarily disconnect service.

The telephone company may make changes in its facilities, equipment, operation and procedures; if such changes affect the compatibility or use of this device, the telephone company is required to give adequate notice of the situation with the FCC.

If the telephone company requests information on what equipment is connected to their lines, inform them of:

- a. The telephone number to which this unit is connected.
- b. The Ringer Equivalence Number (REN).
- c. The USOC jack required.
- d. The FCC Registration number.

Items (b) and (d) are indicated on the label. The Ringer Equivalence Number (REN) is used to determine how many devices can be connected to your telephone line. In most areas, the sum of the REN's of all the devices on any one line should not exceed 5.0. If too many devices are attached, they may not ring properly.

Part 15, Class B

This device complies with Part 15 of FCC rules. Operation is subject to the following two conditions:

1. This device may not cause harmful interference, and
2. This device must accept any interference received, including interference that may cause undesired operation. This equipment has been tested and found to comply with the limits for a Class B digital device, pursuant to Part 15 of the FCC Rules. These limits are designed to provide reasonable protection against harmful interference in a residential installation. This equipment generates, uses and can radiate radio frequency energy, and if not installed and used in accordance with the instructions, may cause harmful interference to radio communications. However, there is no guarantee that interference will not occur in a particular installation. If this equipment does cause harmful interference to radio or television reception, which can be determined by turning off and on, the user is encouraged to try to correct the interference by one or more of the following measures:
 - Reorient or relocate the receiving antenna.
 - Increase the distance between the equipment and receiver.
 - Connect the equipment into an outlet on a circuit different from that to which the receiver is connected.

⚠ Changes or modifications not expressly approved by party responsible for compliance could void the user the user authority to operate the equipment.

INTRODUCTION

This CompactFlash-sized 56K Modem Card is designed for Windows CE-based palm-sized PCs, handheld PCs and any computer with a CompactFlash slot.

The CompactFlash-sized 56K Modem Card is simple to use. No setup effort is needed, and no external power is required. Plug and you are ready to go.

SYSTEM REQUIREMENTS

- One Type I CompactFlash Slot supporting IO functionality.
- Windows CE 2.0 or newer version
- Operates in 3.3v power supply
- CF+ and CompactFlash Spec. Reversion 1.4 compliant Card Services and Socket Services

OPERATING ENVIRONMENTS

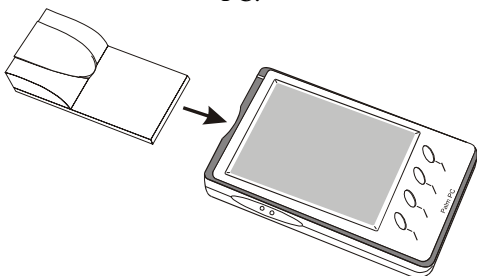
Software Compatibility

Windows CE 2.0 or newer version

HARDWARE CONNECTION

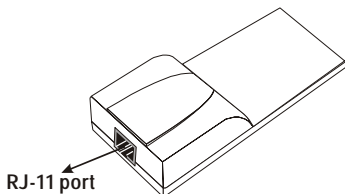
Connecting to a PDA/Palm-sized PC

1. Insert the CompactFlash-sized 56K Modem Card into the CompactFlash slot of your Windows CE-based PDA/Palm-sized PC.



Connecting to the telephone line

1. Connect the telephone line to the RJ-11 port.



CONNECTING TO YOUR ISP

Before you perform the following procedures, make sure the CompactFlash-sized 56K Fax/Modem Card is well connected to your PDA/palm PC and the telephone line is also plugged into the RJ-11 port.

Using Pocket PC 2002s

Step 1: Make a new connection

1. Go to **Start**→**Settings**→**Connections**. Click on **Connections**.
2. Select **Internet Settings** in the first field. Tap **Modify**.



3. Select **New...** in the following screen.

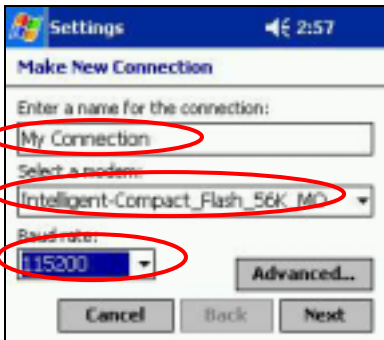


4. In the below screen, enter the following settings and then tap **Next** to continue.

Enter a name...: Enter a name like My Connection for identification.

Select a modem: Select **Intelligent-Compact_Flash_56K_MO**.

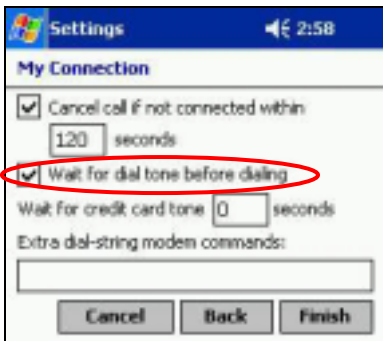
Baud Rate: Set to **115200**



5. Enter the Phone number (the dial-up number should be already provided by your ISP).



6. Make sure **Wait for dial tone before dialing** is checked. Tap **Finish**.



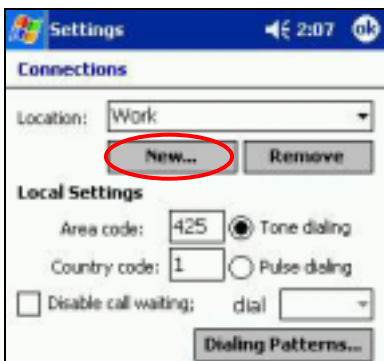
7. Select the new connection to be used when dialing in the Internet Settings. When selecting, tap and hold your stylus on the connection, and select **Always Dial** in the pop-up menu. Tap **OK**.



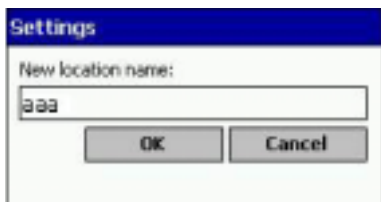
8. You will be back to the Connections screen. Tap on the **Dialing Locations** tab.



9. Tap **New...** in the below screen.



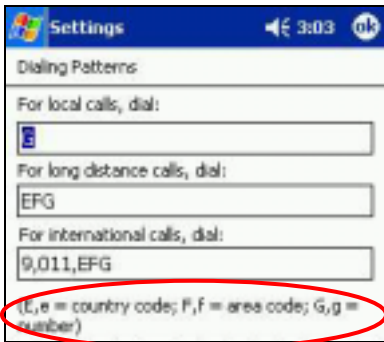
10. Enter an appropriate name for the New location name field. Tap **OK**.



11. Adjust **Local Settings** (Area code, Country code tone Dialing...) if necessary. Tap **Dialing Patterns...**



12. Enter proper settings in this screen and tap **OK**.



Step 2: Dial and Connect

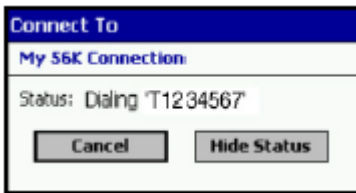
13. Go to **Start**→**Programs**→**Connections**. Tap on the icon for the modem connection you created. Tap **Connect**.



14. In the next screen, make sure the correct **User name** and **Password** are entered.



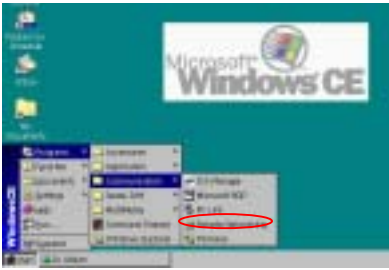
15. Call status screens will appear to indicate the dialing is in process.



Using Handheld PCs or any devices with Windows CE3.0

Step 1: Make a new connection

1. Select
Start→**Programs**→**Communication**
→**Connections**→**Remote Networking**.



2. Double-tap the **Make New Connection** icon.



3. Enter a name for the connection, such as "ISP Dial-Up."
4. Select **Dial-Up Connection**, then tap **Next**.



5. Select your modem type, i.e. **Intelligent Compact_Flash 56K Modem**.



6. Generally, there's no need to change any

settings in the **Configure** or **TCP/IP Settings** dialog boxes. The only setting that needs to be change in the **Configure...** dialog box is the **Connection Preferences**. Select **Baud Rate** at 115200 if the default is otherwise.



7. Most ISPs now use server-assigned addresses. However, if the ISP you are connecting to does not use server assigned addresses, enter the addresses in the **TCP/IP Settings** dialog box. Select **Next** to finish.
8. Enter the access phone number and select **Finish**.



Step 2: Dial and Connect

Once you have created the dial-up connection, double-tap the connection, enter your user name and password, and select **Connect** any time you want to connect.



Call status screens will appear to indicate the dialing is in process.



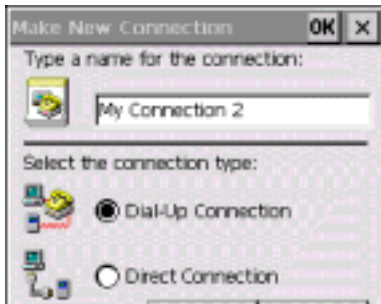
Using Handheld PCs or any devices with Windows CE2.XX

Step 1: Make a new connection

1. Select **Start**→**Programs**→**Communication**→**Connections**→**Remote Networking**.
2. Double-tap **Make New Connection**.



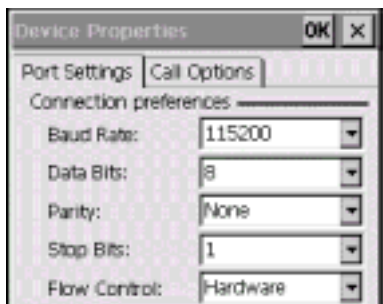
3. Enter a name for the connection, such as "My Connection 2"
4. Select **Dial-Up Connection**, then tap **Next**.



5. Select your modem type, i.e. **Intelligent Compact_Flash 56K Modem**.



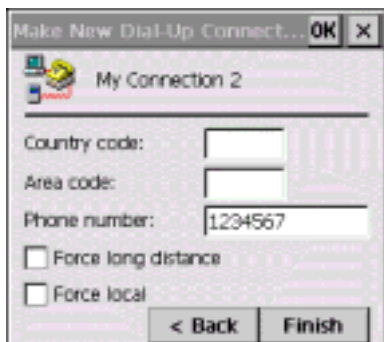
6. Generally, there's no need to change any settings in the **Configure** or **TCP/IP Settings** dialog boxes. The only setting that needs to be change in the **Configure...** dialog box is the **Connection Preferences**. Select **Baud Rate** at **115200** if the default is otherwise.



7. Most ISPs now use server-assigned addresses. However, if the ISP you are connecting to does not use server assigned addresses, enter the addresses in the **IP address** field. Tap **OK**.

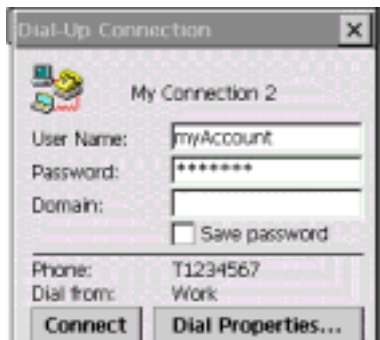


8. Enter the access phone number and select **Finish**.



Step 2: Dial and Connect

Once you have created the dial-up connection, double-tap the connection, enter your user name and password, and select **Connect** any time you want to connect.



Call status screens will appear to indicate the dialing is in process.

